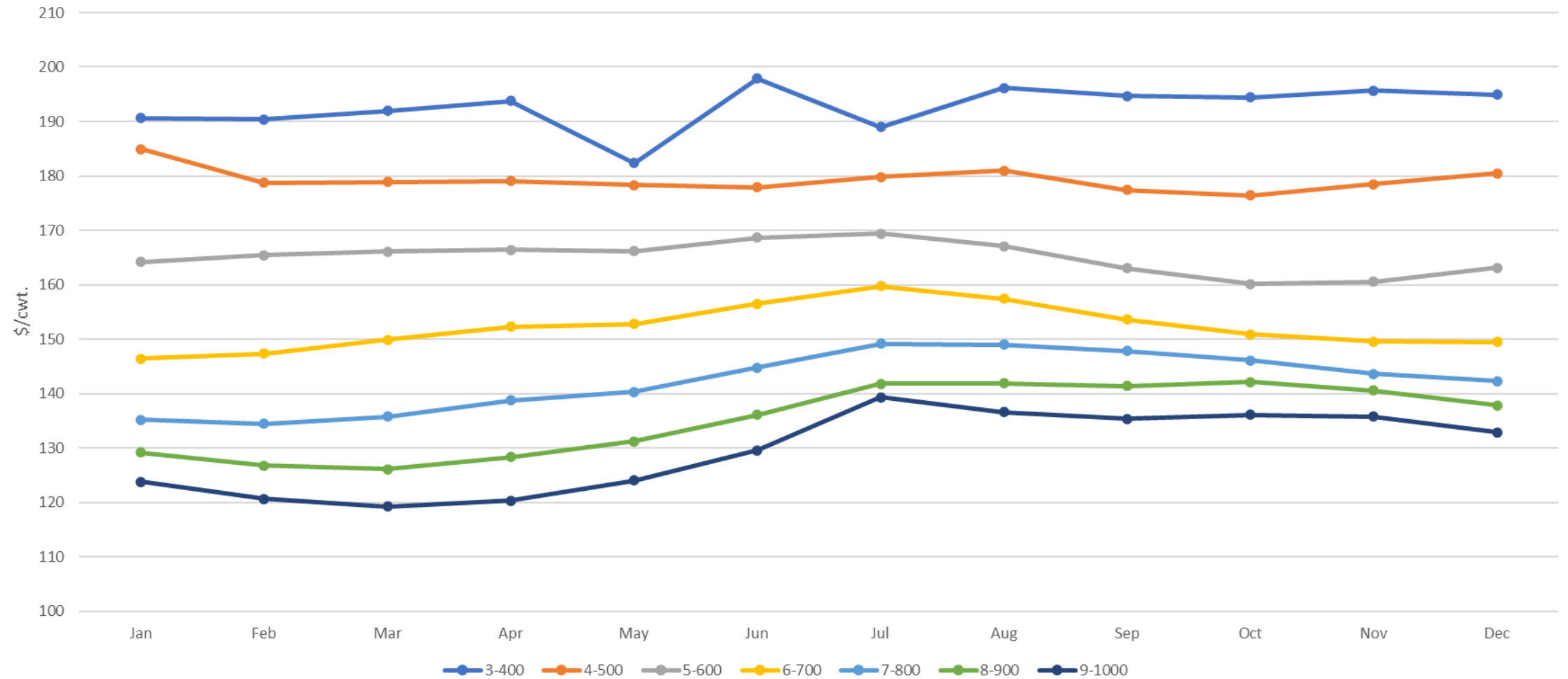
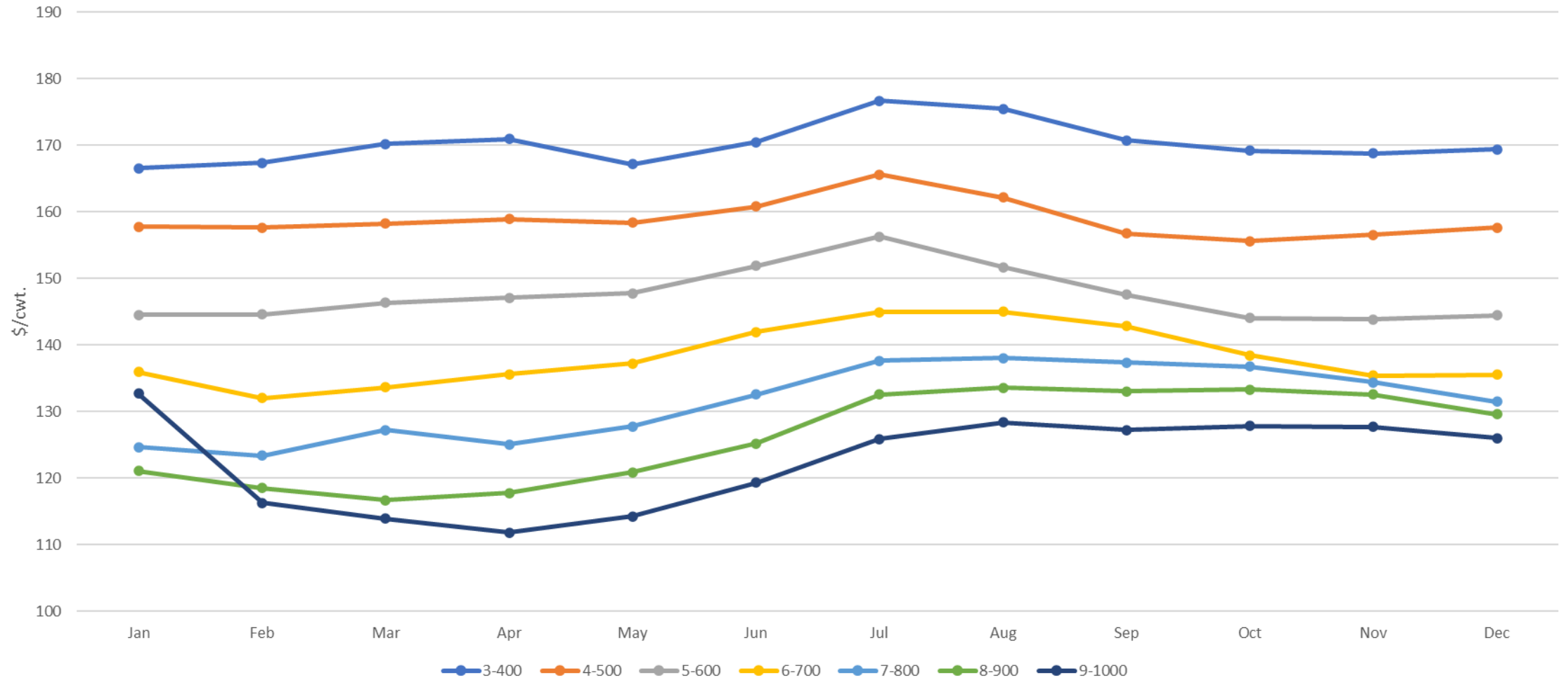
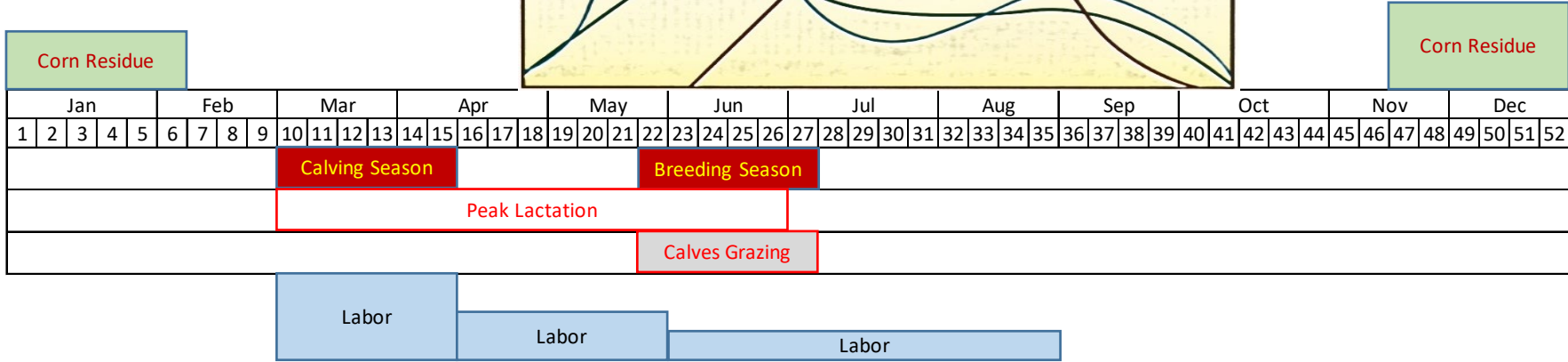
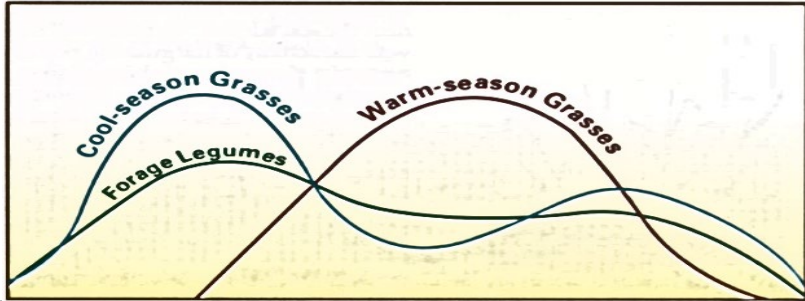


Nebraska Monthly Average Auction Price 2003-2022 - Feeder Steers by Weight Class



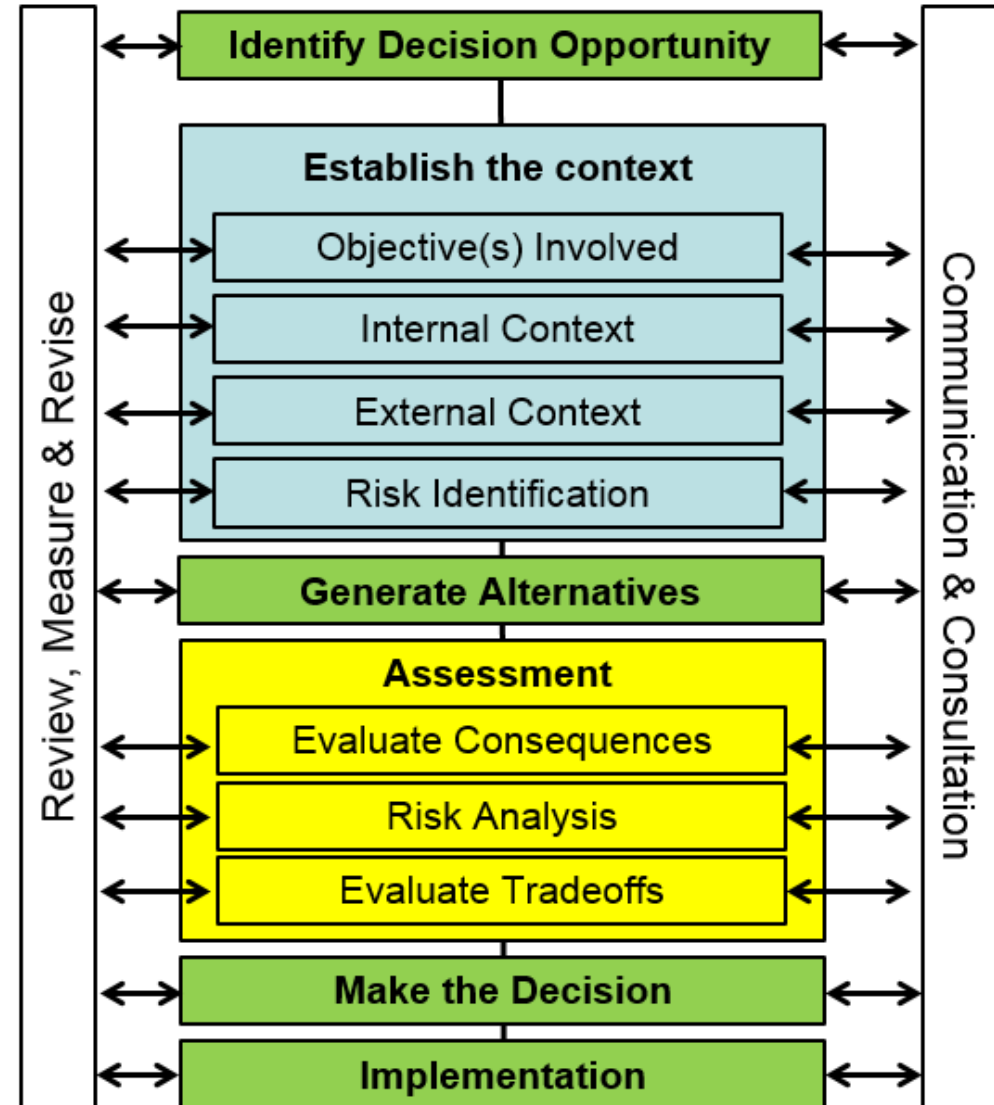
Nebraska Monthly Average Auction Price 2003-2022 - Feeder Heifers by Weight Class





# Decision Making in Agriculture

## A Process for Making Smart Choices



# What am I trying to accomplish with the placement of my calving season?

- Reduce labor requirements
- Reduce cost (especially feed costs)
- Manage weather risk
- Maximize use of off ranch feed resources (i.e. corn stalks)
- Matching finishing operation
- Minimize health risks/problems
- Match cow nutrition requirements with forage/feed resources
- Maximize re-breed percentage
- Market timing (maximize revenue per cow)
- Calf performance (maximize weight + uniformity)

